

2026 OMPA Crop Report

April 2026



Number of taps

19219

Bags - 4

Buckets - 3

Tubing - 11

**This report is based on 16 crop reports.
Number of reports by district:**

#1 - 7

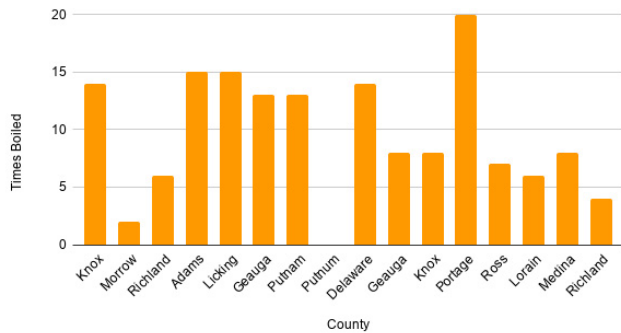
#2 - 0

#3 - 4

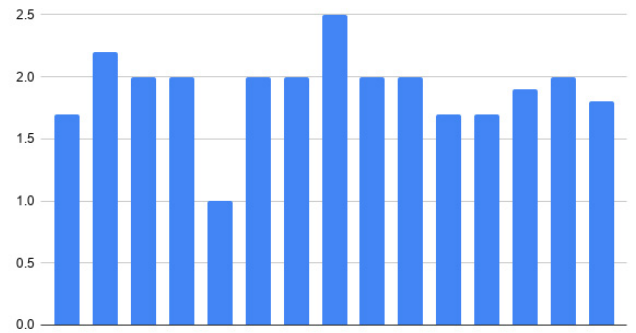
#4 - 2

#5 - 3

Times Boiled vs. County



Quality of sap by farm - avg. 1.9



FEBRUARY 2026

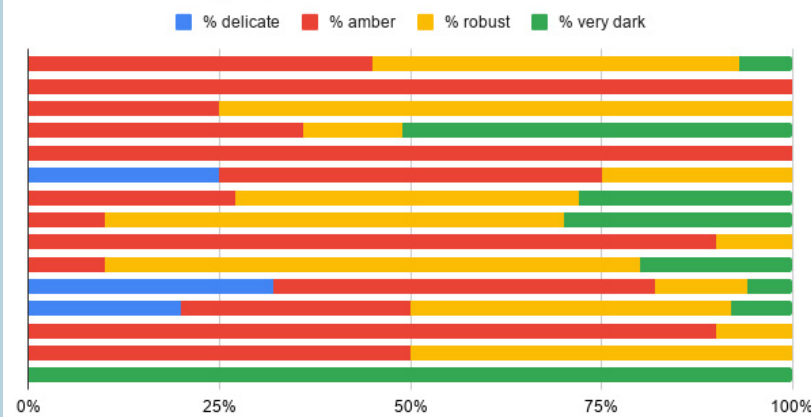
SUNDAY	MONDAY	TUESDAY	WEDNESDAY	THURSDAY	FRIDAY	SATURDAY
1	2	3	4	5	6	7
8	9	10	11	12	13	14
15	16	17	18	19	20	21
22	23	24	25	26	27	28

MARCH 2026

SUN	MON	TUE	WED	THU	FRI	SAT
1	2	3	4	5	6	7
8	9	10	11	12	13	14
15	16	17 St. Patrick's Day	18	19	20	21
22	23	24	25	26	27	28
29	30	31				

Other start dates
12/31
1/28

Color Percentage by Farm



Sugar Sand

All but one report listed sugar sand as

Medium

One producer listed sugar sand as 10% light, 50% medium and 40% heavy

Comments

Morrow

- First season trial and error

Adams

- Our year started late due to weather and became too warm making for record excess of extra dark syrup. we had 2 extreme warm weeks where sap flowed great, but provided very dark syrup. Note: We operate very traditionally and lose some syrup to filtering.

Geauga

- Too much sunshine and warm weather

Putnum

- The season ended too early. Our first taps only lasted 3 weeks

Delaware

- Odd year. too warm for too long, or too cold for too long but when it came it ran well

Geauga

- Disappointing season. The cold start had a lot of potential

Knox

- The sap came quick and fast and all our syrup was made within 10 days
- Highest 24 hr sap run ever and highest boil yield ever

Portage

- New tubing 1/3 of taps, lost power from 3/13 - 3/16

Ross

- 3 runs (52% of syrup) before the deep freeze, 4 runs (48%) afterwards